

2024 Conference



California
community
land trust
network

Los Angeles
Sept 12–13, 2024



Community Ownership in the Central Valley

Friday, Sept. 13, 2024

Today's Presenters

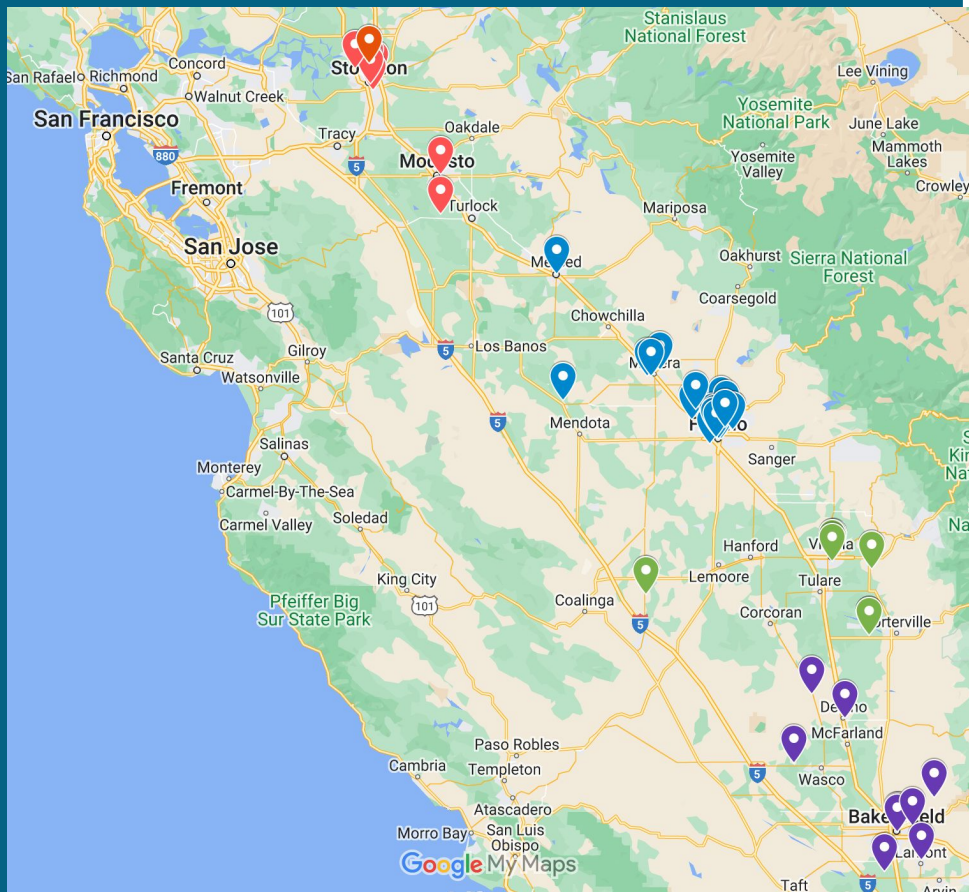
Jacky Rivera (Moderator), SJV Community
Ownership Program Coordinator, CACLTN + FIV

Raziel Ramil, Community Development Project
Manager, Little Manila Rising

Nayamin Martinez, Executive Director,
Central California Environmental Justice Network
(CCEJN)

Dezaraye Bagalayos, Director of Program
Coordination, Allensworth Progressive Association /
Allensworth Community Development Corporation
(ACDC)

Mari Perez-Ruiz, Executive Director, Central
Valley Empowerment Alliance



Snapshot of Central Valley & SJV Community Ownership Program

- RFP, Landscape Scan
- 2023 & 2024 Workshops
- Over 30 organizations





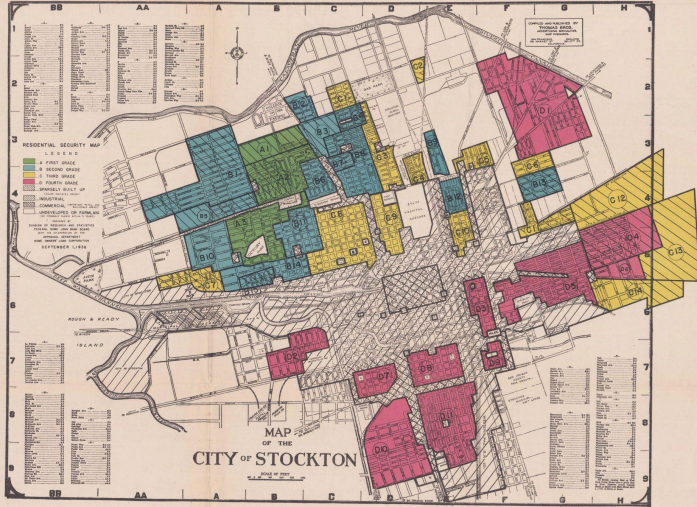
LITTLE MANILA RISING

**Empowering South Stockton
through community-led
development**



Raziel (Rachel) Ramil | she/hers |
Community Development Project Manager

LITTLE MANILA RISING



Stockton's
first
community
development
corporation

Our Vision

Little Manila Rising believes in mutual prosperity by standing with community in shared struggle. We stand beside South Stockton, sharing the burden of “resilience,” while figuring out what our locality needs in order to thrive. In pursuit of this, we are in the early stages of establishing Stockton’s first community development corporation. Our first development site is our newest acquisition: the historic Legionarios del Trabajo building. This is the site of our office building, and community resilience center.

Little Manila Rising believes in mutual prosperity by standing with community in shared struggle. We stand beside South Stockton, sharing the burden of “resilience,” while figuring out what our locality needs in order to thrive. In pursuit of this, we are in the early stages of establishing Stockton’s first community development corporation. Our first development site is our newest acquisition: the historic Legionarios del Trabajo building. This is the site of our office building, and community resilience center.

LITTLE MANILA RISING



Contact Information

Raziel Ramil, Community
Development Project Manager,
raziel@littlemanila.org

Irene Calimlim, Community
Development Director,
irene@littlemanila.org

LMR's Linktree



Central California Environmental Justice Network



VISION

CCEJN will end *environmental racism*, achieve *economic justice* and *health equity* through sustainable regional solutions.



CENTRAL CALIFORNIA
ENVIRONMENTAL JUSTICE NETWORK

Alternatives to Ag practices & ownership models

- If we're going to tell farmers to stop using pesticides we have to show them what to do instead!

- ***Farmworkers want land where they can grow their own food and make their own living, without using pesticides***

"We want our future to mean a healthier community, and we know the way we're doing things isn't going to get us there.

We're trying to set up an alternative and we know it's going to take some time."

- Isabel Arrollo, 1983-2020



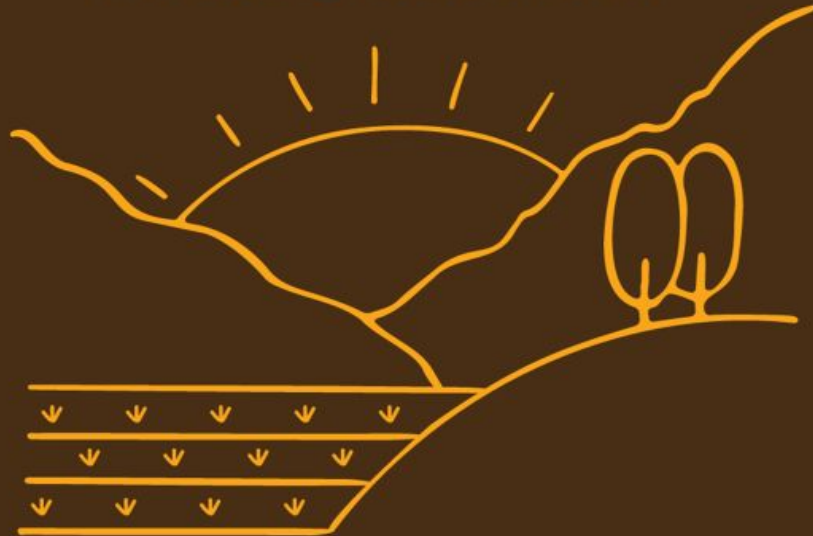
La Milpa de Fresno



A demonstration farm where farmworker families are planting the fruits, vegetables, herbs, flowers and medicinal plants they've been long waiting for space and support to grow.

**COMMUNITY-OWNERSHIP
OF LAND & FOOD SYSTEM**

**WORKER-OWNED
COOPERATIVES**



**COMMUNITY
LAND TRUSTS**

**CCEJN'S LONG-TERM VISION FOR
AGROECOLOGY PROGRAM
(GROUNDED IN INPUT FROM MILPA LEADERS)**

ALLENSWORTH PROGRESSIVE ASSOCIATION



Allensworth, CA | Tulare County
Wowol Yokuts Land
Southern San Joaquin Valley | Tulare Basin

Know your past, grow your future.

-Brandi Mack



Alленsworth Progressive Association



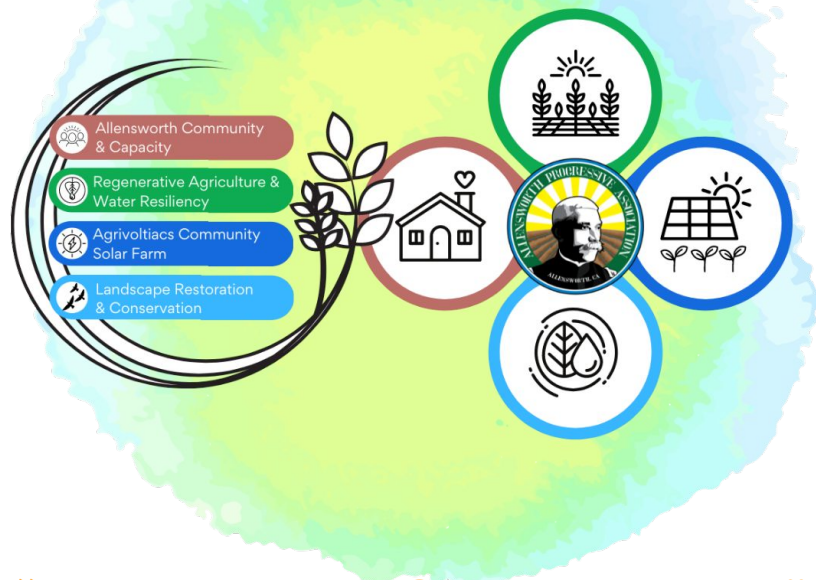
Our work is rooted in our shared histories and our shared experiences. The **land**, the air, and the **water**, also share those histories and experiences.

The Great Central Valley is one of the most exploited and manipulated places on the planet. The environmental abuses that we contend with are now exacerbated by climate change.

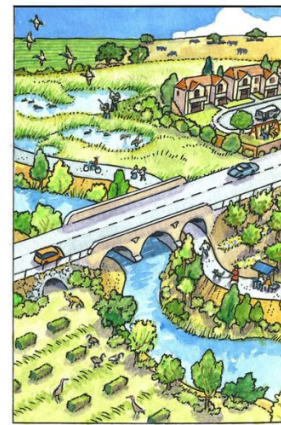
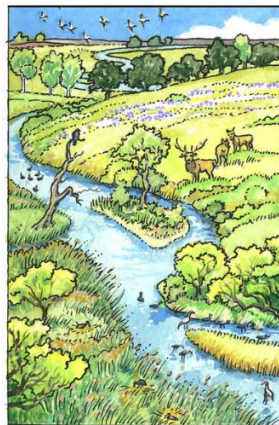
The APA is growing the relationships needed to create a climate adaptive and responsive rural community of color that can serve as a model of regeneration throughout the Central Valley.

Allensworth

Progressive Association



“Know your past, Grow your Future”





The Future of Allensworth is Bright!

Allensworth Progressive Association

Denise Kadara, President | denise@allensworthpa.org

Dezaraye Bagalayos, Assoc Co-ED | dezaraye@allensworthpa.org

Tekoah Kadara, Assoc Co-ED | tekoah@allensworthpa.org

ALLENSWORTH PROGRESSIVE ASSOCIATION | SEPT 2024



CENTRAL VALLEY EMPOWERMENT ALLIANCE

**Serving Rural Unincorporated
Communities in Madera,
Fresno, Tulare, Kings and
Kern County**



MISSION

Founded in 2016, Central Valley Empowerment Alliance is a grassroots economic and community development organization founded by community for community to develop equitable and transformative change to farmworker and low-income BIPOC communities in rural unincorporated communities in Madera, Fresno, Kings, Tulare and Kern Counties.

VISION

The Central Valley Empowerment Alliance envisions a community where “housing is a human right” and generations of Central Valley families with sufficient assets to thrive and rooted in vibrant, diverse, and forward-thinking communities with the ability to grow, and develop insight to abolish the culture of community marginalization; to fruition these communities will be able to identify, triage, and through the Rural Green New Deal and a Elementary to College Pipeline treat the root cause of those disproportionate statistics, which will set the stage for the Central Valley to be truly reflective of its state’s diversity of prosperity.

ORGANIZING MODEL

Central Valley Empowerment Alliance applies the oldest grassroots organizing Saul Alinsky’s model, Industrial Areas Foundation model, consisting of one on one individual, house meeting and community events to identity and develop leadership around priority issues.



WHAT ARE THE PRIORITY ISSUES

Community has identified the following priority initiatives:

- Housing Justice
- Climate Equity and Environment Justice
- Economic Equity
- Rural Health Equity
- Education Equity/Pipeline from Elementary to College



HOUSING JUSTICE INITIATIVE

Central Valley Empowerment Alliance emphasizes the importance of innovative solutions to achieve housing equity in these disadvantaged areas through engaging in the following initiatives: 1) Rent Control 2) Development of affordable and Accessible Housing 3) Changing the Redlining, Racist and Discriminatory Policies and Systems.

Central Valley Empowerment has led the following campaigns:

- Tenant Protections and Just Cause Statewide Legislation (2017-2022)
- Led a lawsuit to prevent the displacement of our unhoused neighbors (2020-2021)
- Led a signature petition drive to place rent control in the City of Delano ordinance (2023-2024)
- Poplar Forward Housing Justice Initiative to develop a 127 multi-family rental complex and an 80 single family development for homeownership for farmworkers families.





TRANSFORMATIVE CHANGE MAKING



Mari Perez-Ruiz
Mari@CVEmpowermentAlliance.org
Arturo Rodriguez
Arturo@CVEmpowermentAlliance.org

[HTTPS://CVEmpowermentAlliance.org](https://CVEmpowermentAlliance.org)

2024 Conference



California
community
land trust
network

Los Angeles
Sept 12–13, 2024

Community Ownership in the Central Valley

Friday, Sept. 13, 2024