



Meeting the Moment:

Solidarity and Partnerships with Indigenous Peoples in the California CLT Movement

organized by

California
community
land trust
network

co-hosted by



with support from

rwjf robert wood johnson
foundation

as part of



GLOBAL COMMUNITY LAND TRUST VIRTUAL SUMMIT

MAY–JUNE 2026

A six-week series of free online events organized by CLT and community land networks from around the world



Australian Community
Land Trust Network

California
community
land trust
network



Canadian
Network of
Community
Land Trusts



CatComm
CATALYTIC COMMUNITIES

COMMUNITY
LAND TRUST
NETWORK

EUROPEAN
CLT
NETWORK



FIDEICOMISO
DE LA TIERRA
CAÑO MARTÍN PEÑA



FONCIER
SOLIDAIRE
FRANCE
Réseau des organismes
de foncier solidaire

Greater
Boston
Community
Land Trust
Network



Minnesota Community
Land Trust Coalition
A permanent solution for affordable housing

sosch.
South of Scotland
Community Housing

co-hosted by



RONDO
Community Land Trust



INTERNATIONAL CENTER FOR
COMMUNITY LAND TRUSTS

with support from

rwjf robert wood johnson
foundation

as part of



Session Guidelines

- **Questions:** Please submit any questions you may have throughout the session in the Q&A box.
- **Recording:** This session is being recorded, and notes will be shared with all participants after the event.
- **Language Access:**
 - This session offers live interpretation from English to Spanish
 - Accept the Zoom prompt in the chat and select your preferred language.
 - Use the chat link to access audio translation in your preferred language.

organized by
**California
community
land trust
network**

co-hosted by


RONDO
Community Land Trust


**INTERNATIONAL CENTER FOR
COMMUNITY LAND TRUSTS**

with support from

rwjf robert wood johnson
foundation

as part of


WORLD
CLT
DAY
2026

Meet the speakers:



Darlene Franco
Wukchumni
Community
Land Trust



Aerin Monroe
Pathways of
Purpose &
Liberated
Futures Lab
(LFL) CLT



**Alice Lincoln-
Cook**
Firekeeper
Alliance & LFL
CLT Partner



Ruth Wortman
Humboldt
Healthy
Families & LFL
CLT Partner



HISTORY OF CALIFORNIA

Thru a Native Lens

- ▶ **1848** - Treaty of Guadalupe Hidalgo
- ▶ **1769-1833** - California Missions
- ▶ **1849** - California Gold Rush
- ▶ **1850** - California became a state of USA
- ▶ **1851-1852** - California's 18 Unratified Indian Treaties, hidden until 1905
- ▶ **1851** – Indian Reservations/Rancherias started in California
 - ▶ Established as places for homeless Indians
 - ▶ Many Tribes did not relocate to Reservations/Rancherias
 - ▶ Federally Recognized & Non Federally Recognized tribes
- ▶ **1880 -1960's** Indian Boarding Schools
- ▶ **1884** - Dawes Act – Land Allotments
 - ▶ Indian Trust Land Allotments
- ▶ **1850's...** Dams diverting water

Land Acknowledgement

The California Community Land Trust Network acknowledge that we and all our members, reside and work on the ancestral and unceded homelands of Indigenous peoples of Turtle Island. We have deep respect for Tribal communities, who are the original and continuing stewards of the land, waters and resources and in that spirit, we're committed to supporting repatriation of land and land back decolonization, whether through the community land trust model or not.

The economic and cultural development of California and the United States was built on genocide, stolen Indigenous land and the backs of enslaved Africans and their descendants. As such we recognize the diversity of struggles for justice and honor the interconnected movements for Indigenous sovereignty, Black liberation, disability justice, immigrant justice, gender justice, and other liberation/justice movements and support CLTs' autonomy to carry out efforts and campaigns that honor their local context and unique histories.

California Community land trust network

- 50 CLTs in 25 counties
- 1,650+ units of housing
- Over 3,500 residents
- 75% BIPOC residents



Programs:

Policy & Advocacy

Curriculum

Community Building

Technical Assistance



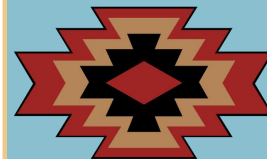
GGH

Gundzik | Gundzik | Heeger
Attorneys at Law ^{LLP}





WUKCHUMNI



WUKCHUMNI CLT

A Tribal-led Community Land Trust focused on providing affordable housing for our elders and community, and holding land in perpetuity for our future generations.



The Wukchumni people are one of the Yokuts bands that are indigenous to the San Joaquin Valley and Western Sierra Nevada mountain range. Due to land grabs, forced relocations from our ancestral lands, and the US government not ratifying our treaties, the Wukchumni people have no tribal land or reservation. We do not receive aid from the government, although many tribal members have California Indian Judgement Roll Numbers which qualifies them for healthcare.

Since 1987, the Wukchumni Council, led by our Elders, have petitioned for Federal Acknowledgement to the Federal Government. We have maintained our governance, culture, language, and traditions since our petition, and we have continued to provide social and ceremonial services to our Wukchumni people as we have always done.





The Wukchumni Council oversees all official businesses and fundraising efforts on behalf of the Wukchumni people and land back initiatives. We operate the Wukchumni Tribe 501(c)3 organization to provide direct services and build capacity within the Tribe to continue meeting the needs of our community, and to provide education, cultural, and food sovereignty programs.



**YOUTH SERVICES &
PREVENTION PROGRAMS**

**FOOD ACCESS & TRIBAL
FOOD PANTRY**

**WUKCHUMNI FARMS
FOOD SOVEREIGNTY PROJECT**

**NATIVE PLANT NURSERY
& RESTORATION**

RECREATING OUR VILLAGE



The idea for Wukchumni CLT comes from multiple visioning sessions and conversations that have been guided by feedback from Wukchumni youth, adults, and elders. Our people want to recreate a village that will nourish the Wukchumni spirit and way of life, while honoring past and future generations, and provide spaces for our people to live together, work together, and care for one another as we always have.

We envision our sites to include affordable and accessible quality-built, energy efficient homes, community gardens, multi-use gathering spaces, playgrounds, and ceremonial grounds. Wukchumni CLT will offer a pathway to reclaiming traditions and community wellness, and ensuring that the original people of this land have homes in their own homelands.



HOUSING NEEDS ASSESSMENT



HIGH HOUSING DEMAND

Over half of respondents (53%) live in overcrowded, multi-household homes—a key indicator of housing instability. Among those whose needs are unmet, 65% cited lack of privacy, space, or overcrowding.

STRONG INTEREST IN TRIBAL HOUSING

88% of respondents would relocate to tribal housing if affordable and culturally appropriate options were available. Many expressed specific interest in Bu'hach'hai Village.

CULTURAL PRIORITIES ARE CLEAR

The top amenities identified include ceremonial grounds (95%), elder-specific housing (93%), health/wellness centers (93%), gardening/nursery space (88%)

AVERAGE AREA MEDIAN INCOME (AMI) IS 46%



All respondents expressed interest in Bu'hach'hai Village for the opportunity to revitalize the Tribe's culture and to surround themselves with family and heritage.

OUR FIRST LAND ACQUISITION



On this 1 ½ acre vacant lot in North Visalia, we plan to create a modern village that honors Wukchumni culture, provides affordable rental housing to tribal elders and income qualified community members, and expand our food sovereignty programs by installing gardens and increasing the services of our Wukchumni Farms Tribal Food Pantry for residents and community members

**HOUSING FOR
TRIBAL ELDERS**

**COMMUNITY
CENTER**

**AFFORDABLE RENTAL
COMMUNITY**

**EXPANDING FOOD
SOVEREIGNTY PROGRAMS**

BUILDING FOR THE FUTURE



This Housing Needs Report offers a foundational understanding of the current housing conditions, preferences, and aspirations of Wukchumni tribal members. The Wukchumni Community Land Trust (WCLT) will use these findings to inform the planning, design, and implementation of the Tribe's first tribally owned housing development: Bu'hach'hai Village.

- **Launch a fundraising campaign** to support land acquisition and early-stage pre development of Bu'hach'hai Village.
- **Collaborate with a real estate broker** to identify suitable parcels for housing development and State funding programs.
- **Establish a partnership with an experienced nonprofit housing developer** to strengthen financing applications.
- **Engage with peer organizations** through the California Community Land Trust Network to leverage shared knowledge and technical assistance.
- **Facilitate a community-led design process for the vacant lot.**

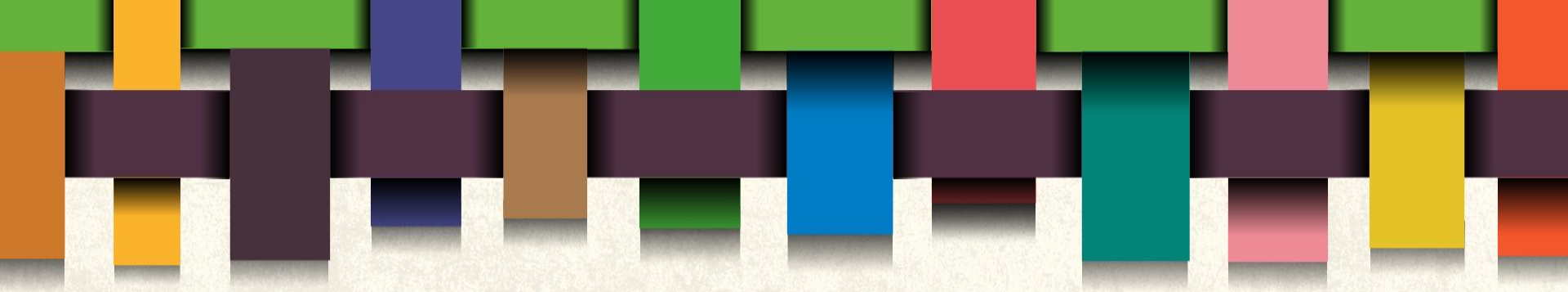
Contact Information

Learn more at:

- <https://www.wukchumnitribe.org/>
- <https://www.youtube.com/watch?v=vEtIHLzssc>
- <https://www.facebook.com/wukchumnifarms/>
- Instagram: [@WukchumniFarms](#)

WUKCHUMNI





Q&A



GROWING POSSIBILITIES SEEDING FUTURES



LIBERATED
FUTURES LAB

**COMMUNITY LAND
TRUST**





ORGANIZATIONAL PURPOSE

Pathways of Purpose (POP) empowers youth and the community to dream big for their lives and the world by providing asset-based, STEAM educational and vocational programs. We address the growing risks of climate change, social and economic inequities with movement building towards sustainable systems.

POP's Cultural Foodways Network farm in Humboldt County California, Summer 2025

Founded as a 501c3 nonprofit community land trust model and STEAM educational and vocational program in 2021. We have successfully launched our innovative “Green STEAM” programs in Humboldt County, with a focus on supporting Black, Indigenous, and People of Color and other divested communities, build social, environmental and economic justice, liberation, equity and sovereignty.

POP CO-FOUNDERS



**Aerin Monroe, He/Him
Co-Founder & Co-Director**

(Afro-Latinx, Caribbean, Creole & Irish Descent)

Agroecologist, environmentalist, writer, musician
and activist, with a horticultural, natural
landscaping & regenerative farming background



**Dr. Susanne Sarley, She/Her
Co-Founder & Co-Director**
(Mediterranean, Eastern European, Southern Italian,
Welsh & Jewish Descent)

Researcher, program/curriculum designer, arts
integration, project/place-based learning, youth &
community dev., writer, activist, artist & musician



INTERTRIBAL ADVISORS & PARTNERS



Nicole Halvorsen
(Karuk & Shasta)

**POP Board Chair, Business
Director for Sogorea Té Land
Trust & the American Indian Child
Resource Center, Maker & Artist**



Ruth Wortman Bear River Band *(Wiyot,
Mattole, Tolowa Dee-Ni' & Yurok)*

**Founder/Humboldt Healthy Families,
Cultural Coordinator/Sorrel Leaf Center,
Cultural Artist & Ceremony Leader**



Alice Lincoln Cook
Karuk Tribe

**Cultural Fire Practitioner,
Teacher, Basket Weaver,
Co-Founder FireKeepers Alliance
& former chair of the CA Indian
Basketweavers Association**

COMMUNITY NEED

Our target communities are BIPOC and other divested groups in urban and rural areas, tribal lands, and rancherias in Humboldt County and the Northern California region.

- Humboldt County has the highest rate of sea rise in the state of California.
- We have extreme heat, wildfires, coastal flooding, and seismic activity, with extractive industries posing threats to our environment
- Over 50% of residents in the region are low-income. Denser populated areas, tribal lands and rancherias of Humboldt County rising to above 50% low-income, where over 50% of residents are People of Color.
- We have some of the highest rates of ACE's scores and food insecurity in the state, with ¼ of adults receiving food stamps.
- The legacy of colonization and impacts of extractive industries are present today in the social, economic and environmental conditions.



Socioeconomic & Housing Discrimination



Environmental Hazards & Climate Change



Acute Childhood Trauma (ACES) & Health Disparities



Food Insecurity, Energy & Transportation



Educational Inequities & Outcomes



Workforce Training & Unemployment



Cultural foods harvest, grown by our POP Fellows, Summer 2025



COLLABORATIVE VISION

- *Liberated Futures Lab CLT* is a coalition of community-based organizations and partners in the Northcoast redwood region of California, working towards land-based reparations and landback.
- LFL is a land-based project incubator, and co-stewardship model for Black, Indigenous (Intertribal) and People of Color.
- We are moving in solidarity towards our collective futures with planning for environmental conservation, food justice, cultural revitalization, commercial activities and affordable housing.
- LFL is the inspiration for the *Black and Indigenous Land Working Group*, a project we co-facilitate with New Economy Coalition remotely, which has 200 organizations and members nationally, and several abroad.
- We have a collaborative governance structure with our board, two multigenerational cultural councils, youth fellows, and our community partners.



SACRED PURPOSE

REPARATIONS & LAND BACK

Our land justice work centers the need for land-based reparations and land back. Land displacement and disenfranchisement for Black and Indigenous people is an ongoing impact of colonization, economic racism and loss of cultural wealth. Despite the historical and current legacies of these traumas, there are movements for Black and Indigenous communities to return to stewarding the land as they have done since time immemorial.



LIBERATED
FUTURES LAB

LAND BACK



Mattole Tribe traditional territory, mouth of the Mattole River, Petrolia, Humboldt County CA

- The US has seized 1.5 billion acres from Native peoples since the 1700's.
- Over 400 tribes in the US do not have federal recognition or land being held in trust for them.
- There are over 50 non-federally recognized tribes in California, the largest number of unrecognized groups in the US.
- The US is holding over 500,000 acres of land in trust for only the 110 federally recognized tribes in California.
- Less than 1% of the state's landmass and a fraction (roughly 0.6%) of the 70 million acres of tribal homelands.
- Many are beginning to acquire and access their traditional lands through other means, such as partnerships, cultural easements and Land Trusts, which is where our work is situated.

BLACK LAND LOSS & REPARATIONS

- Displacement of Black, Indigenous and People of Color- BIPOC communities in CA have lost much of their historical land base, and are dealing with ongoing displacement, loss of community wealth, cultural knowledge, and health due to gentrification and climate disparities.
- In 1910, about 14% of US farmers were Black, with stewardship of more than 16 million acres.
- Today, less than 1% of farms in the US are Black owned, in CA it's only 0.3% of farms.
- Reversing the promise of land, changed the economic and social landscape of African Americans, from Reconstruction until now.



LOCAL LAND DATA

FARMLAND ACCESS IN HUMBOLDT COUNTY-

- Over 1300 producers and 700+ farms locally
- Besides 2 on Tribal lands, there are no BIPOC owned AND operated
- 3 are Latin led, but not owned
- Zero Black led and/or owned



Community Space,
Commercial Kitchen
& Offices



Geodesic Greenhouses
& Research Center



Arts & Culture Annex



Food Forest & Farm



Retreat Cabins &
Elders Village



LAND HAS MEMORY

“Revolution is based on land. Land is the basis of all independence. Land is the basis of freedom, justice, and equality...”

— Malcolm X.

MOCKUP OF THE LFL COMMUNITY LAND TRUST PROOF OF CONCEPT SITE

PROPERTY GOALS



Humboldt County is in the North Coast redwood region of California, known for its majestic redwoods, stunning coastline and beaches and outdoor recreation. We are home to more Indigenous people per capita than most of California, with 8 federally recognized tribes, and numerous other unrecognized bands, organizations, councils and cultural heritage groups. Our community land trust will provide necessary infrastructure, economic activity and cultural place-making for our region's most divested communities—supporting a legacy of social change, economic and environmental justice.

- ▶ **Location:** Northern Humboldt County, 20 - 100 acres, mix of forest and farmland.
- ▶ **Proximity to Nature:** Access to wildlife trails and vistas of the region's redwood forests.
- ▶ **Structures:** Turnkey single family home with infrastructure such as (ADU' s, barn, greenhouse, sheds).
- ▶ **Accessibility:** Universal design (ADA compliance), within 25 miles of the local main hospital and towns.
- ▶ **Water:** Access and water rights through a watershed and/or legal well.
- ▶ **Zoning:** Mixed use residential, commercial and agricultural zoning.
- ▶ **Hazard Mitigations:** Fire trails, outside of high fire risk and flood zones.



CULTURAL FIRE: FOOD, FIBER & MEDICINE

LAND MANAGEMENT & WORKFORCE TRAINING



Alice Lincoln-Cook, Karuk Tribe

She is the Co-Founder of FireKeepers Alliance, a Cultural Fire Expert, Basketweaver & Jewelry Maker

LFL partners have developed our land trust model to protect and restore land in Northern California, including cultural technologies for fuels reduction and preventing wildfires- and to encourage food, fiber and medicine.

With the leadership of partners like Karuk basketweaver and “cultural fire” practitioner, Alice Lincoln-Cook, we support Indigenous stewardship, traditional knowledge and cultural fire practices in California, along with creating workforce training programs for underserved communities in cultural land management.

Learn More About Alice Lincoln-Cook’s Work
<https://www.firekeeperalliance.us>



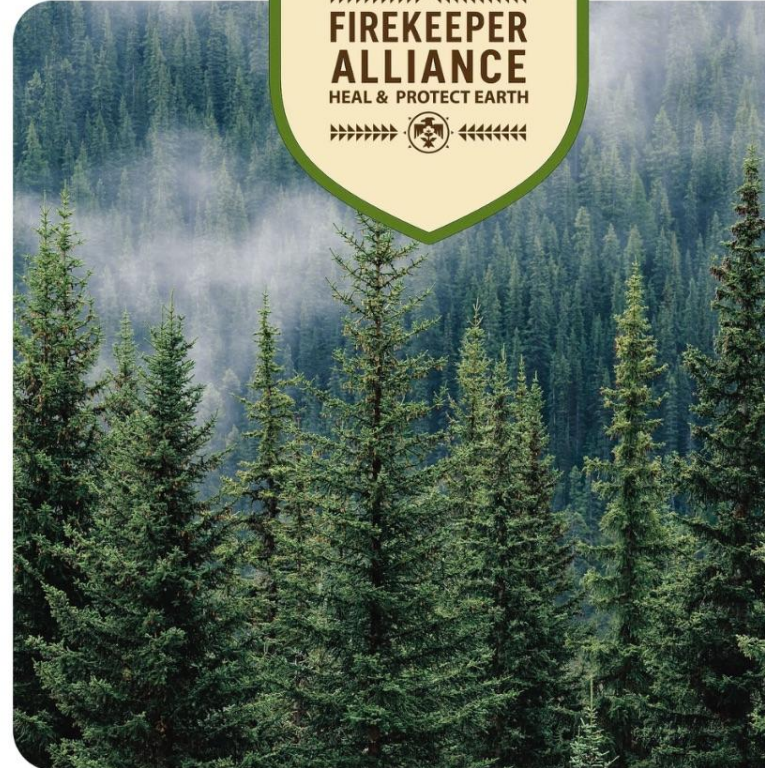
FIREKEEPERS ALLIANCE



FireKeeper Alliance is a regenerative fire and land stewardship organization dedicated to healing the land through the respectful and intentional use of fire.

By integrating Indigenous cultural burning practices with modern wildland and structural firefighting training, we bring together ancestral wisdom and contemporary safety standards.

We believe fire, when used with knowledge, respect, and purpose, is a powerful force for regeneration, balance, and a renewed relationship between people and the natural world.



CULTURAL BURNS FOR COMMUNITY HEALTH



Photo courtesy of Chelsey Cook

Baby Rattle for Grandson



Baby Basket Making

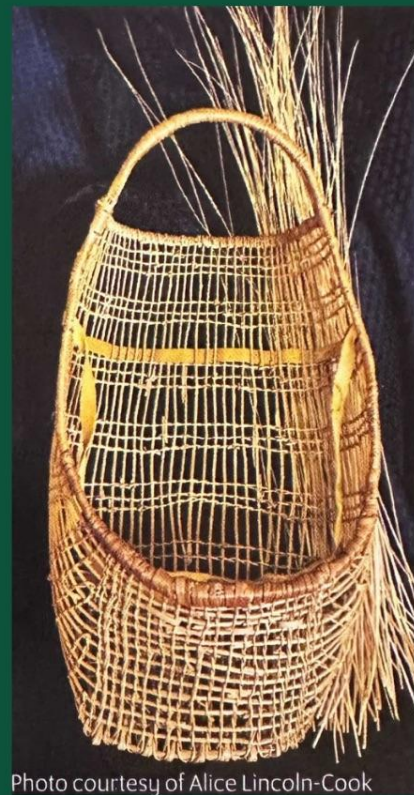


Photo courtesy of Alice Lincoln-Cook



COALITION FOR REMATRIATION



Ruth Wortman at the Mattole River mouth, where she helped her tribe restart the Salmon Ceremony after over 100 years.

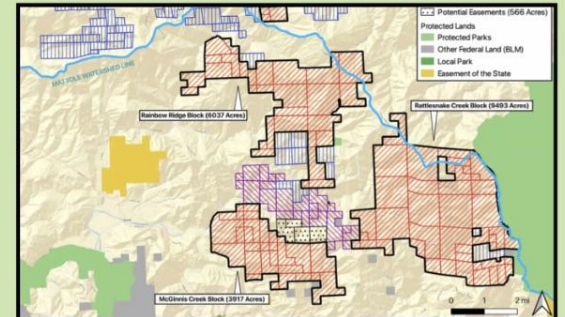


(Photo Credit Sandy Tillis)

CONSERVATION EASMENTS & CULTURAL REVILATIZATION

- With our partnership with Humboldt Healthy Families and founder Ruth Wortman, LFL seeks to fill gaps such as: supporting the cultural revitalization, repatriation and land back for federally unrecognized Tribal communities, Native led Intertribal organizations, nonprofits and groups.
- Liberated Futures Lab is situated in respect for and in solidarity with other land back practices.
- We are partnering and supporting land back processes in our region for Native led stewardship projects in the region.
- These projects support wildlife corridor conservation efforts, and the coalition will ensure land is returned and protected through Indigenous land stewardship practices.

Survey map of old growth forest parcels in the Mattole region's wildlife corridor.





REMATRIATION FOR RECOVERY

HUMBOLDT HEALTHY FAMILIES VILLAGE

- Humboldt Healthy Families was founded to support the recovery pathways of Native mothers, Two Spirit and families, by providing safe housing, resources, food sovereignty, healing, cultural revitalization and ceremony.
- This Native Women and Two Spirit led group is making plans to design and build the HHF Recovery Village and will steward additional land with LFL's support.

**Ruth Wortman, Bear River Band
(Tolowa Dee Ni', Yurok, Mattole & Wiyot Descendant)**

**Cultural Coordinator for Sorrel Leaf Healing Center,
Founder of Humboldt Healthy Families, Ceremony Leader,
Singer, & Traditional Artist**





Humboldt Healthy Families: Cultural Revitalization



Humboldt Healthy Families offers classes and programs to support intertribal cultural revitalization in the redwood region of CA. Including: gathering, basket weaving, beading, regalia making, sweats and Two Spirit talking circles.

Their long term goals of repatriation will support their other cultural revitalization efforts. They currently steward several acres in the Northern Humboldt area of redwood forested land, where they're doing cultural work and holding space for community recovery and healing.

Ruth weaving a baby basket in the Eel (Wiyot) River, Humboldt County CA
(Photo Credit Juanita Villareal, 2026)

THANK YOU FOR HAVING US



LIBERATED
FUTURES LAB



**PATHWAYS
OF PURPOSE**



**FIREKEEPER
ALLIANCE**
HEAL & PROTECT EARTH



**HUMBOLDT
HEALTHY FAMILIES**

CONTACT POP & PARTNERS



connect@pathwaysofpurpose.org



www.pathwaysofpurpose.org



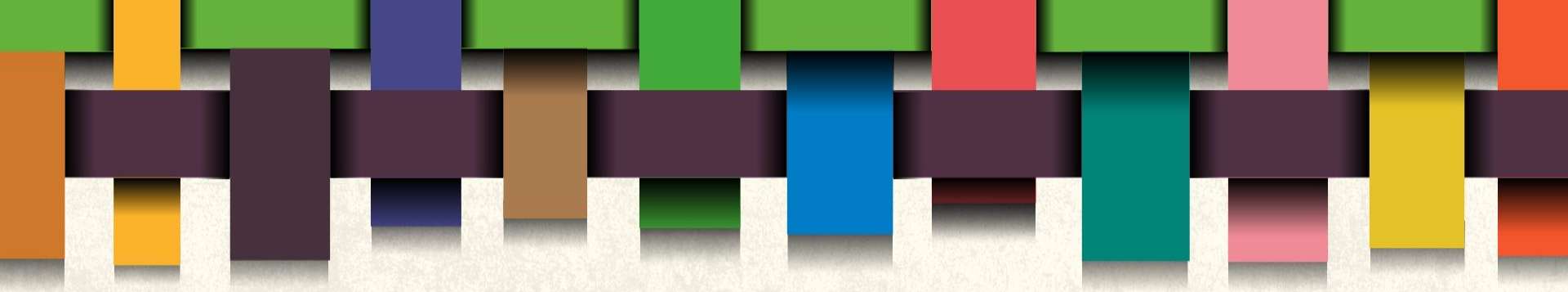
[@pathwaysofpurpose](https://www.instagram.com/pathwaysofpurpose)



LEARN MORE



SCAN HERE

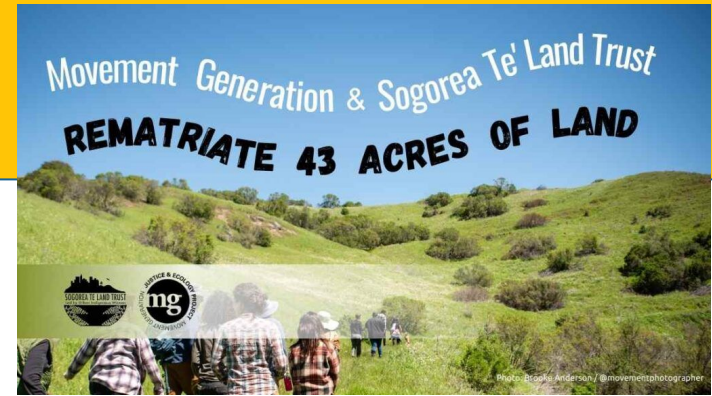


Q&A

Solidarity continued

Highlighting other ways CACLTN members practice solidarity with Black and Indigenous communities in their respective communities:

- CLT 101s: Grounding in U.S. CLT history & roots (ie New Communities Inc.)
- Board governance (ex: intentional representation)
- Explicitly stating purposes & goals on websites, etc.
- Voluntary Land tax - creating or participating in
 - [Shuumi Land Tax](#) (Sogorea Te' Land Trust)
 - [Kuuy Nahwá'a / Guest Exchange](#) (Tongva Taraxat Paxaavxa Conservancy)
 - ~~% of CLT home sale goes to local Tribal led organizations (South Tower CLT)~~
*Post event correction: [Donate 10% of land value](#) to local indigenous organizations (South Tower CLT)
- ["Liberation Easements"](#)



Altadena Earthseed Community Land Trust, commemorating Octavia E. Butler and her novel, *Parable of the Sower*.

We seek to preserve the diversity of Altadena, with attention to Black, Brown, Indigenous, and working class communities who are particularly susceptible to displacement.

Celebrating the HERstoric Liberation Easement on Homefulness 1

Posted by Veryl Pow 13sc on September 05, 2025

Earlier in August, my coworkers and I at the Sustainable Economies Law Center (the Law Center) had the opportunity to witness and celebrate the spiritual and legal unselling of Homefulness 1 through the signing of a first-of-its-kind liberation easement between [POOR Magazine](#) (the legal owner of Homefulness 1) and the [Sogorea Te' Land Trust](#).

Stay connected!

- Sign up for monthly newsletter



Qs: info@cacltnetwork.org

FOLLOW US



CACLTNetwork



ca.clt.network



California Community Land Trust Network



www.cacltnetwork.org

